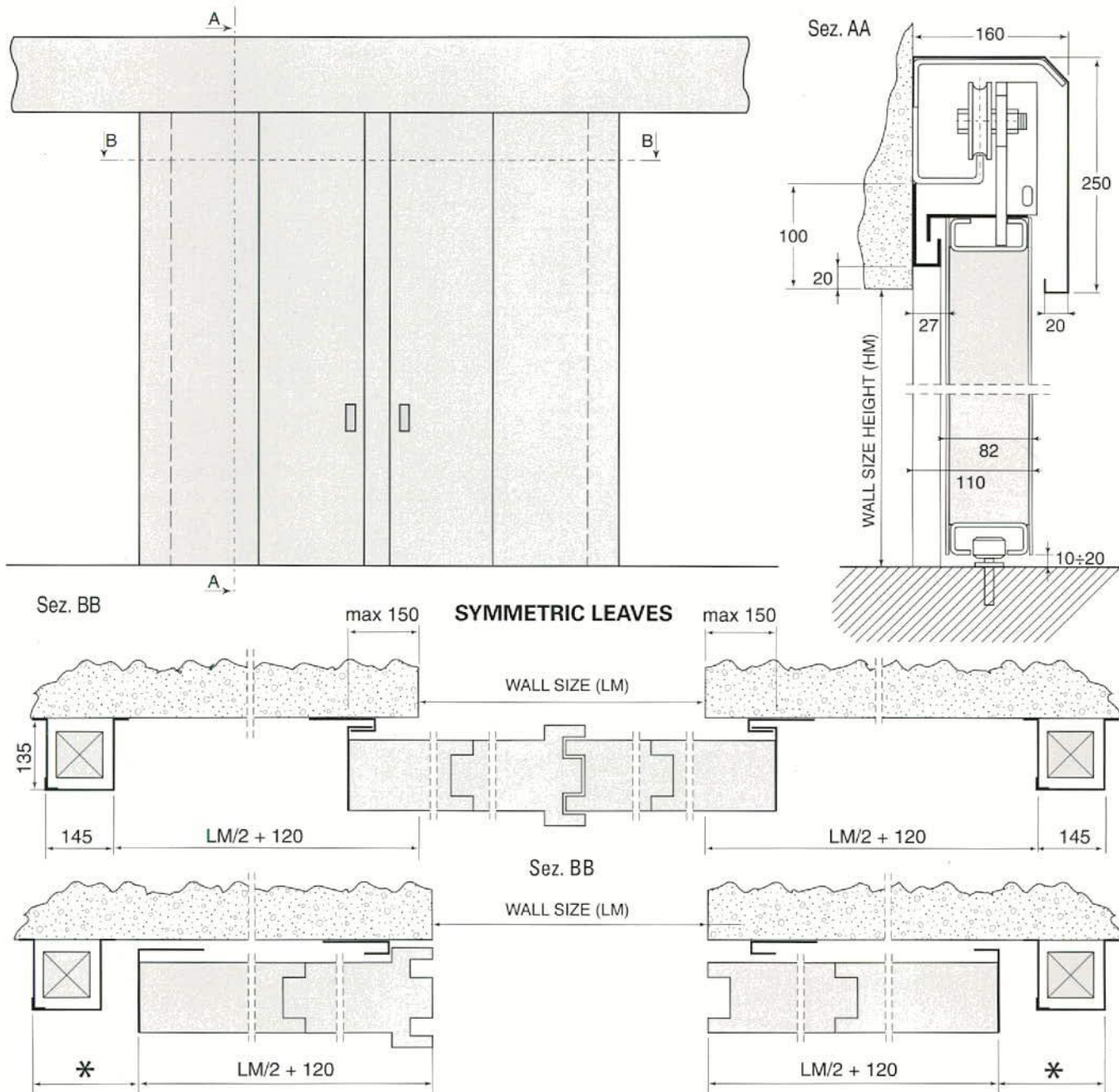


Fire resistant sliding door REI 120 according to Italian rule UNI 9723; constituted by:

- modular panels realised in galvanised, prepainted sheet of steel, welded, with high density insulating package inside.
- Smoke and flame labyrinth on the perimeter of the leaf.
- Upper hoisting rail, low friction, complete of special supports to mount on architrave in reinforced concrete, metallic cover inspectable.
- Thermo-expanding gasket all around the door.
- Superficial finish with primer colour RAL 7035 (brushed).
- Fixed handles for the opening.

- Final or continuous shock absorbers when necessary.
- The sliding door has no floor guide, the alignment is maintained by a bottom wheel not visible. The sliding is sweet thanks to wheels with curve, mounted on double bearing.
- The automatic closing devices (inside the strike jamb) is composed by a weight controlled by a thermo-fuse, position of thermofuse is adjustable according customer's needs.



E= *

The size* changes in relation with width and height, the more HM is < of LM it happens that: * min. 140 – max 340.